

WHISPER 3% & 5%

Roller Blind Fabric Specification

KEY FEATURES:

Fabric composition:	78% PVC, 22% Polyester
Fire retardancy:	EN 13773 : 2003 Class 1, BS5867 - 2, Type B : 2008 for fire retardancy when tested in accordance with BS5438 : 1989
Shading:	Screen - Recommended for computer environments
Moisture resistance:	Recommended for moist conditions

STANDARD SPECIFICATIONS:

Colour range:	4
Louvre widths available:	N/A
Roller fabric width:	250cm (98") nominal
Typical fabric weight:	3% - 485gsm (+/- 10) : 5% - 455gsm (+/- 10)
Fabric thickness:	0.66mm - nominal
Colourfast:	Conforms to BS5867 - 1 : 2004 for light fastness to Grade 6 minimum when tested in accordance with ISO 105 - B02 : 1999
Care instructions:	Wipe with damp sponge; Do not wash; Do not tumble dry; Do not dry clean; Do not iron



SK Systemes
Compass House
Yelverton Business Park
Yelverton
Devon
PL20 7PE

Tel :01822 859178
Fax : 01822 854344
E-mail : sales@sksystemes.net
Web: www.sksystemes.net

Whisper 3%

COLOUR	HEAT		LIGHT		S-C
	T	R	T	R	
Black	4	18	6	18	0.72
Chalk	20	63	16	65	0.35
Linen	13	50	11	51	0.45
Silver	8	38	9	36	0.55

T = % Transmitted : R = % Reflected : S-C = Shading Co-efficient. Shading Co-efficients are expressed as a decimal between 0 and 1. The lower the figure, the higher the shading efficiency of the blind.

This data is based on:

Tests conducted using double glazed 6mm float glass with 12mm air space. Blinds are fully closed.

Shading Co-efficients are calculated for radiation at normal incidence. Standard U value is 2.75 W/M 2k = 0.49Btu/ft2hx°F.

Important: Performance data has been compiled with great care using the latest techniques. However, it is advisable to check actual suitability of fabrics for a particular application before use.

In line with our commitment to product development, specifications may be subject to change without notice.

Whisper 5%

COLOUR	HEAT		LIGHT		S-C
	T	R	T	R	
Black	7	18	8	18	0.72
Chalk	21	60	16	61	0.37
Linen	15	48	12	50	0.47
Silver	10	36	10	37	0.57

T = % Transmitted : R = % Reflected : S-C = Shading Co-efficient. Shading Co-efficients are expressed as a decimal between 0 and 1. The lower the figure, the higher the shading efficiency of the blind.

WHISPER 3%

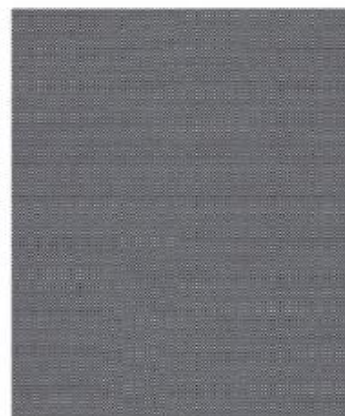
Roller Blind Fabric Specification



Black



Chalk



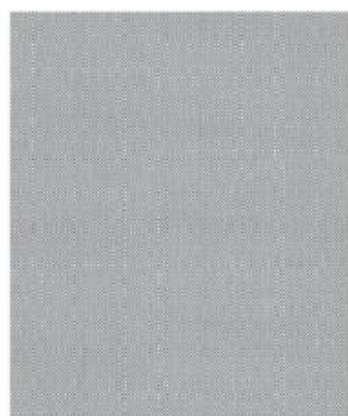
Black



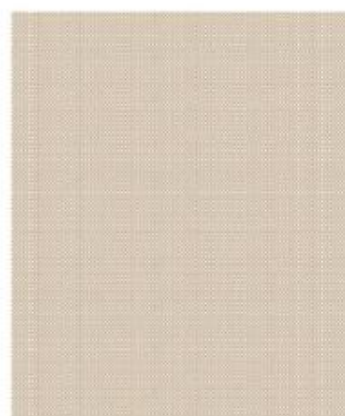
Chalk



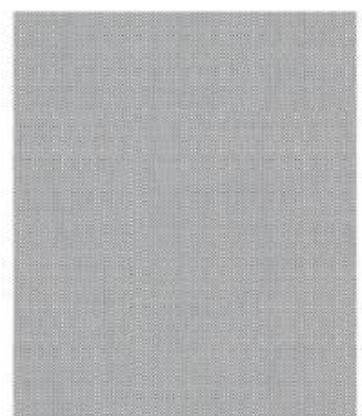
Linen



Silver



Linen



Silver

WHISPER 5%

Roller Blind Fabric Specification